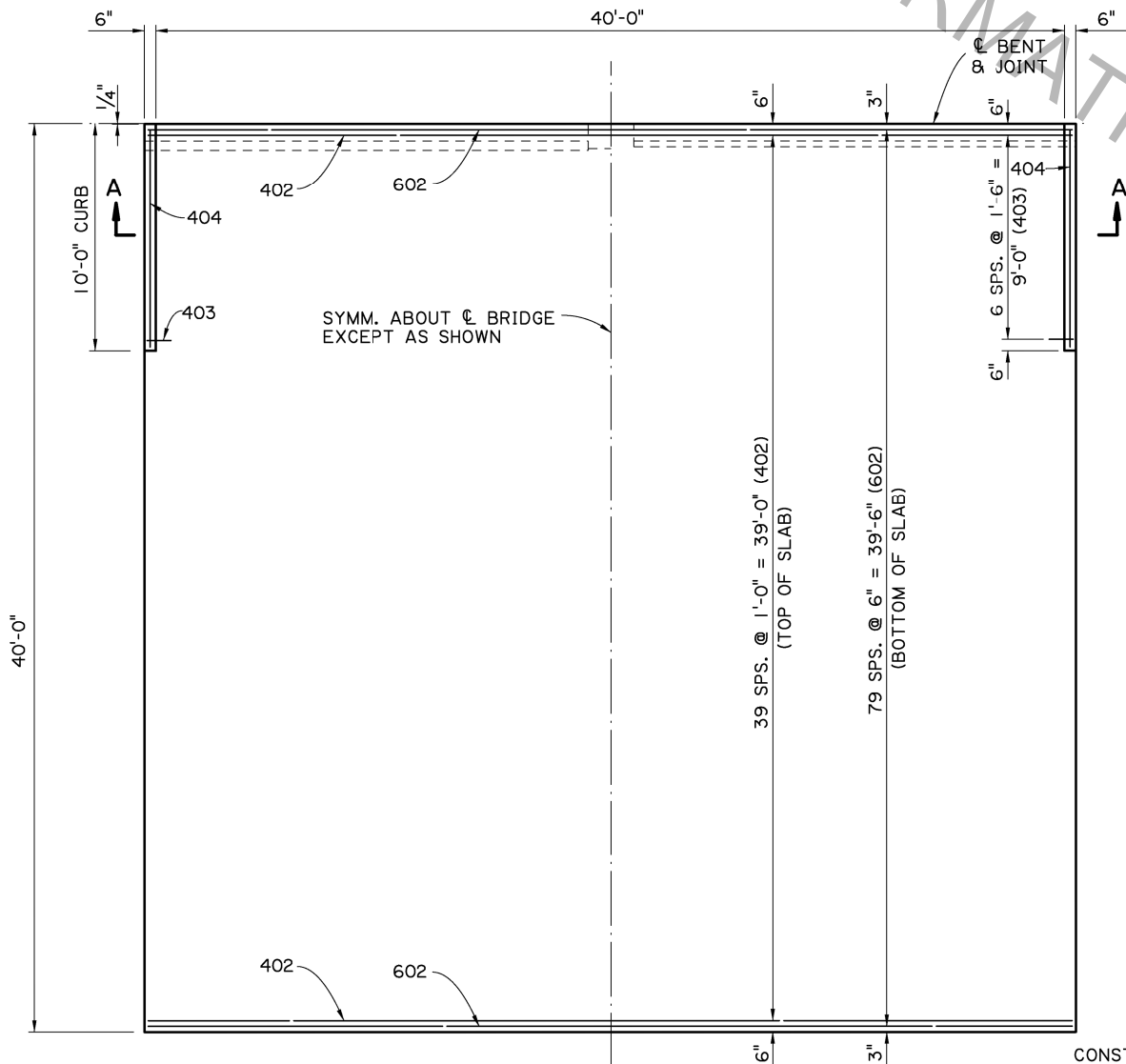
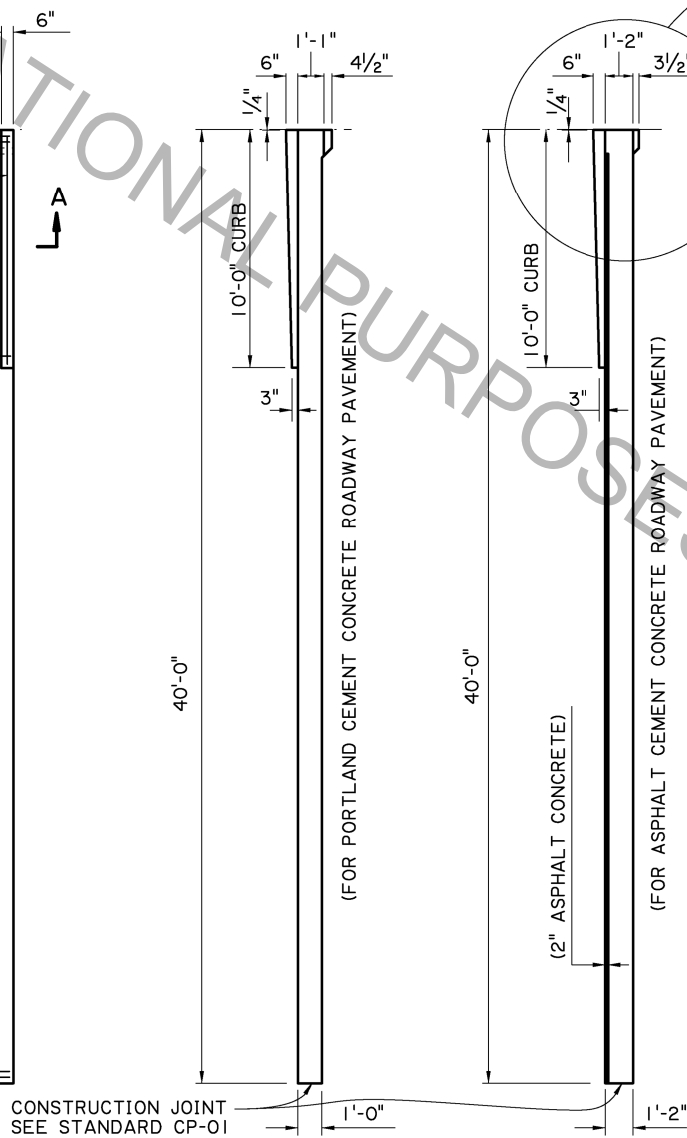


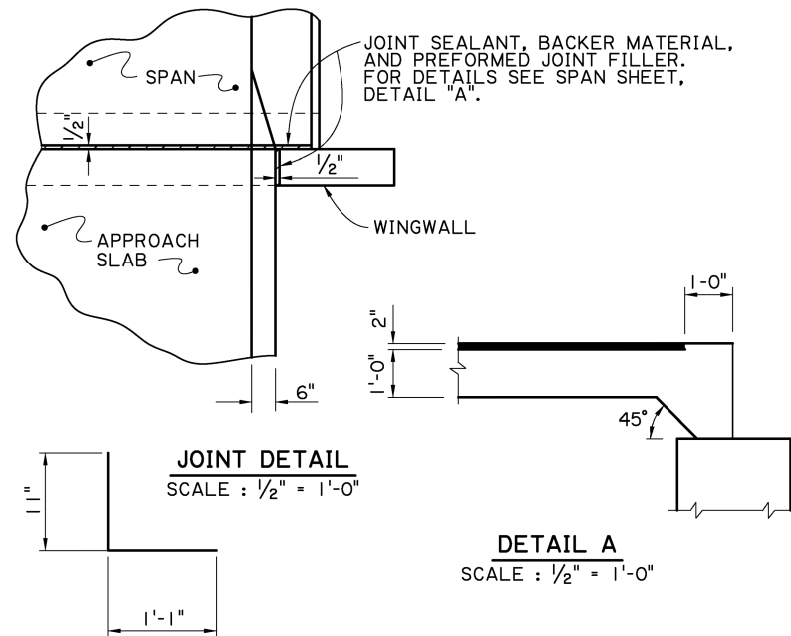
SECTION A-A
SCALE: 1/4" = 1'-0"



PLAN
SCALE: 1/4" = 1'-0"

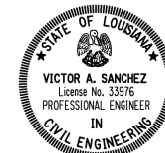


SECTION ALONG C ROADWAY
SCALE: 1/4" = 1'-0"

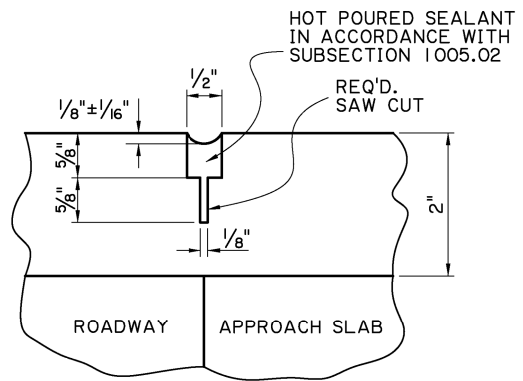


JOINT DETAIL
SCALE: 1/2" = 1'-0"

DETAIL A
SCALE: 1/2" = 1'-0"



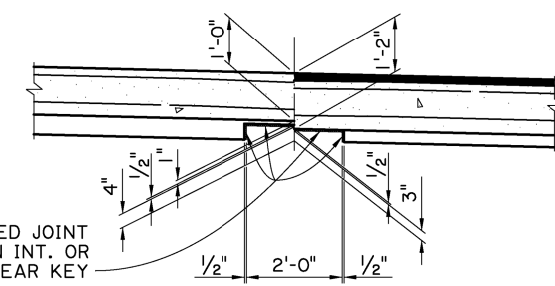
Victor A. Sanchez
05/17/17



SAWING & SEALING JOINT DETAIL
N.T.S.

APPROACH SLAB NOTES:

- CONSTRUCTION SPECIFICATIONS:** LATEST APPROVED LOUISIANA STANDARD SPECIFICATIONS FOR ROADS AND BRIDGES, SUPPLEMENTAL SPECIFICATIONS AND SPECIAL PROVISIONS.
- DESIGN SPECIFICATIONS:** AASHTO LRFD BRIDGE DESIGN SPECIFICATIONS 4th EDITION, WITH 2008 & 2009 INTERIMS.
- STRUCTURAL CONCRETE:** ALL CONCRETE SHALL BE CLASS A1. EXPOSED EDGES SHALL HAVE A 3/4" CHAMFER, UNLESS OTHERWISE NOTED.
- ASPHALT CONCRETE:** TO BE THE SAME TYPE AS THE ASPHALT CONCRETE USED FOR THE APPROACH ROADWAY PAVEMENT OR OVERLAY.
- REINFORCING STEEL:** ALL REINFORCING STEEL SHALL BE GRADE 60. DIMENSIONS RELATING TO THE FABRICATION ARE OUT-TO-OUT OF BARS, UNLESS OTHERWISE NOTED. DIMENSIONS RELATING TO SPACING ARE TO BAR CENTERS.
- BEDDING MATERIAL:** FOR DETAILS OF BEDDING MATERIAL AND UNDERDRAINS. SEE STANDARD DETAIL BD.2.10.1.0.07.
- SAWING & SEALING:** THE ASPHALT CONCRETE SHALL BE SAW CUT AT THE END OF THE CONCRETE APPROACH SLAB THE ENTIRE ROADWAY WIDTH AND SEALED.
- BASIS OF PAYMENT:** ALL MATERIAL SHALL BE PAID FOR UNDER 'CONCRETE APPROACH SLABS' ACCORDING TO THE SPECIFICATIONS, EXCEPT WHERE NOTED ON THIS SHEET.



DETAIL "B"
SCALE: 1/2" = 1'-0"

ESTIMATED QUANTITIES (ONE SLAB)				
BAR NO.	NO.	UNIT LENGTH	TOTAL LENGTH	LOCATION
601	82	39'-7"	3245'-10"	LONGIT. BOT. OF SLAB
602	80	40'-8"	3253'-4"	TRANSV. BOT. OF SLAB
TOTAL NO. 6 BARS = 6,499'-2" = 9,762 LBS.				
401	41	39'-7"	1622'-11"	LONGIT. TOP OF SLAB
402	40	42'-4"	1693'-4"	TRANSV. TOP OF SLAB
403	14	2'-0"	28'-0"	DOWELS IN CURB
404	2	9'-7"	19'-2"	LONGIT. IN CURB
TOTAL NO. 4 BARS = 3,363'-5" = 2,247 LBS.				
TOTAL DEFORMED REINFORCING STEEL = 12,009 LBS.				
CONCRETE APPROACH SLAB = 182.22 SQ.YDS.				
ASPHALT CONCRETE = 18.6 TONS				
SAW CUT & SEAL = 39 LIN. FT.				

- * INCLUDES ONE (1) 1'-8" MINIMUM LAP SPLICE. ALL LAP SPLICES ARE TO BE STAGGERED.
- o TO BE PAID FOR UNDER ITEM CONCRETE APPROACH SLABS.
- o REQUIRED WHEN APPROACH SLAB IS ADJACENT TO ASPHALT CONCRETE PAVEMENT. PAID FOR UNDER ITEM ASPHALT CONCRETE, AND SAWING AND SEALING TRANSVERSE JOINTS IN ASPHALT CONCRETE OVERLAY.

SHEET NUMBER: []

DESIGNED BY: J. NAKHLEH
CHECKED BY: B. DELATTE

PARISH: []

CONTROL SECTION: []

STATE PROJECT: []

REVIEWED BY: D. HYMEL
CHECKED BY: J. NAKHLEH

DATE: 05/17/17

REVISION OR CHANGE ORDER DESCRIPTION: []

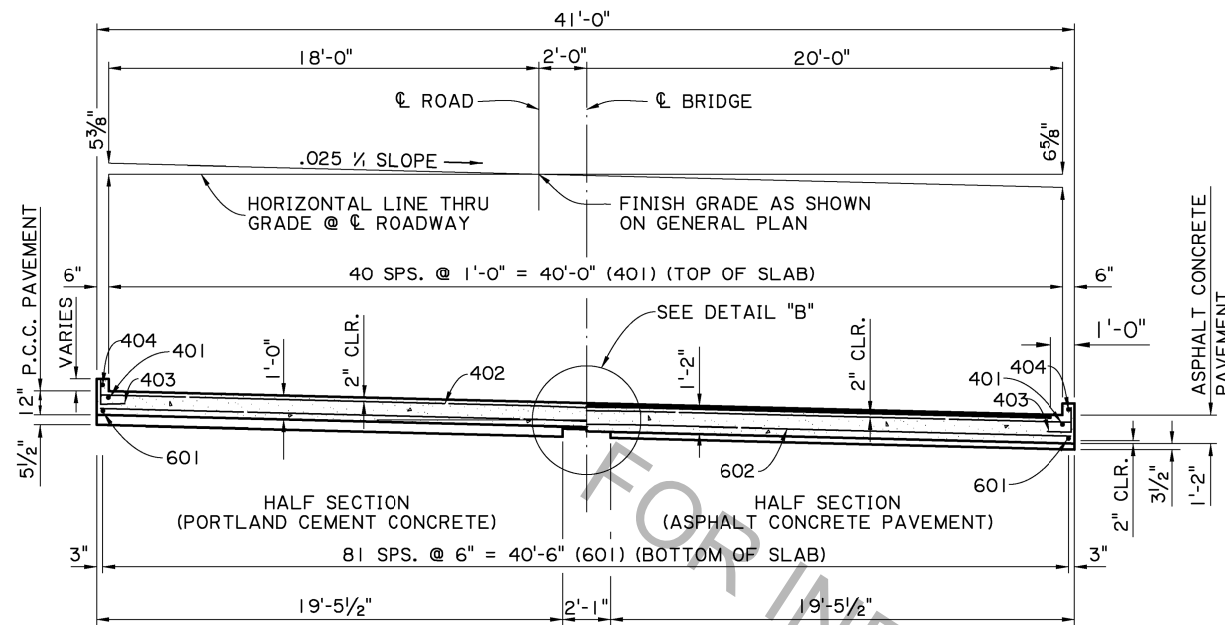
NO. [] DATE []

BY: []

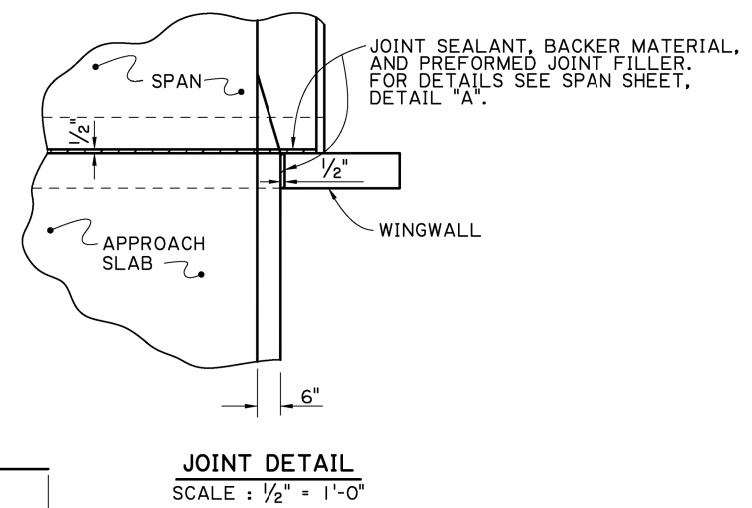
DOTD
DOTD BRIDGE DESIGN

APPROACH SLAB
40'-0" CONCRETE APPROACH SLAB
40'-0" CLEAR ROADWAY
90° CROSSING ONE WAY TANGENT

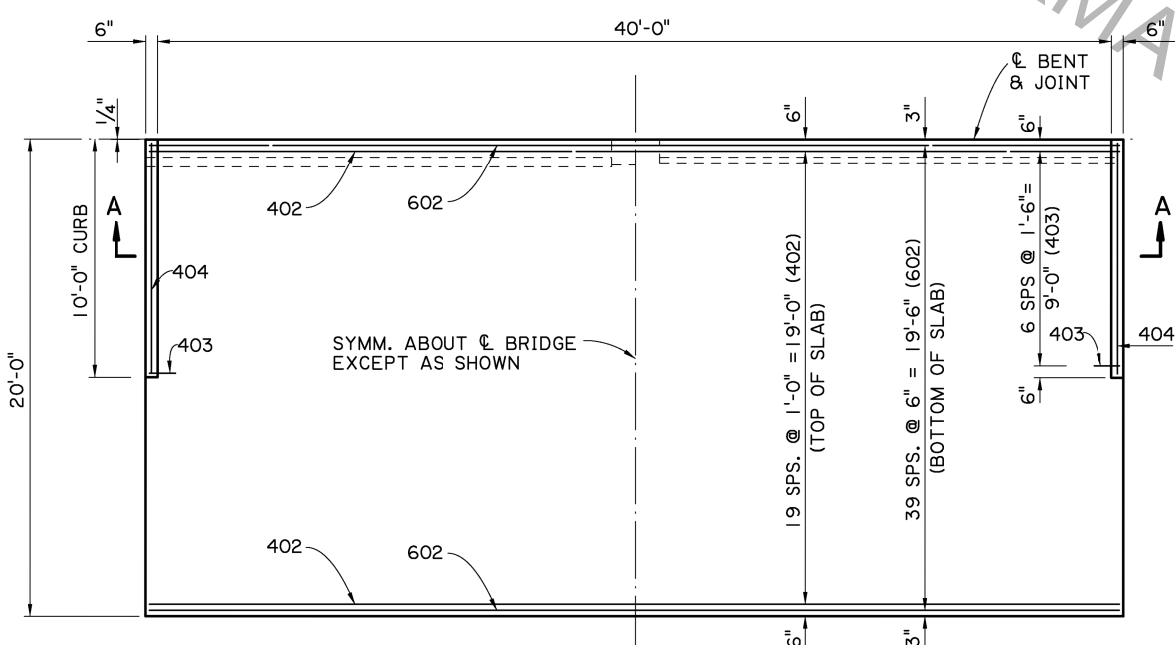
STANDARD DETAIL
CASBR-90-40T-40L-20SL



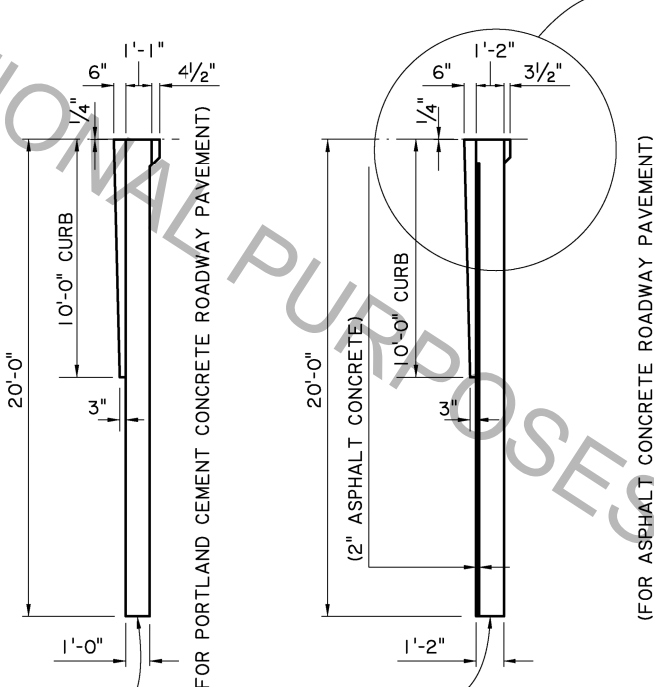
SECTION A-A
SCALE: 1/4" = 1'-0"



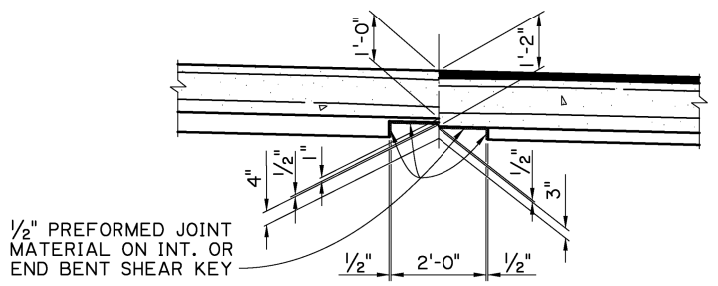
403
2" Ø PIN



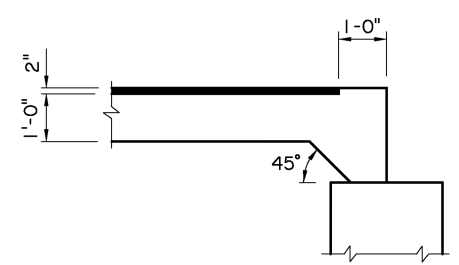
PLAN
SCALE: 1/4" = 1'-0"



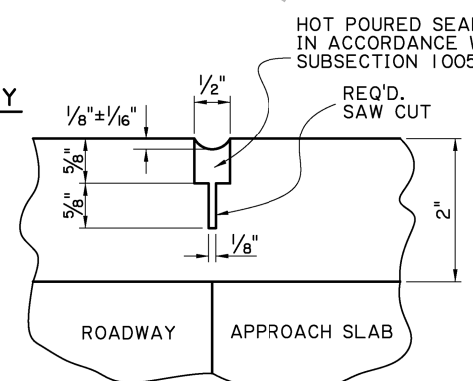
SECTION ALONG CL ROADWAY
SCALE: 1/4" = 1'-0"



DETAIL "B"
SCALE: 1/2" = 1'-0"



DETAIL A
SCALE: 1/2" = 1'-0"



SAWING & SEALING JOINT DETAIL
N.T.S.

ESTIMATED QUANTITIES (ONE SLAB)				
BAR NO.	NO.	UNIT LENGTH	TOTAL LENGTH	LOCATION
601	82	19'-7"	1605'-10"	LONGIT. BOT. OF SLAB
602	40	40'-8"	1626'-8"	TRANSV. BOT. OF SLAB
TOTAL NO. 6 BARS = 3,232'-6" = 4,855 LBS.				
401	41	19'-7"	802'-11"	LONGIT. TOP OF SLAB
402	20	42'-4"	846'-8"	TRANSV. TOP OF SLAB
403	14	2'-0"	28'-0"	DOWELS IN CURB
404	2	9'-7"	19'-2"	LONGIT. IN CURB
TOTAL NO. 4 BARS = 1,696'-9" = 1,133 LBS.				
TOTAL DEFORMED REINFORCING STEEL = 5,988 LBS.				
CONCRETE APPROACH SLAB = 91.11 SQ.YDS.				
ASPHALT CONCRETE = 9.1 TONS				
SAW CUT & SEAL = 39 LIN. FT.				

- * INCLUDES ONE (1) 1'-8" MINIMUM LAP SPLICE. ALL LAP SPLICES ARE TO BE STAGGERED.
- o TO BE PAID FOR UNDER ITEM CONCRETE APPROACH SLABS.
- o REQUIRED WHEN APPROACH SLAB IS ADJACENT TO ASPHALT CONCRETE PAVEMENT, PAID FOR UNDER ITEM ASPHALT CONCRETE, AND SAWING AND SEALING TRANSVERSE JOINTS IN ASPHALT CONCRETE OVERLAY.

APPROACH SLAB NOTES:

CONSTRUCTION SPECIFICATIONS: LATEST APPROVED LOUISIANA STANDARD SPECIFICATIONS FOR ROADS AND BRIDGES, SUPPLEMENTAL SPECIFICATIONS AND SPECIAL PROVISIONS.

DESIGN SPECIFICATIONS: AASHTO LRFD BRIDGE DESIGN SPECIFICATIONS, 4th EDITION, WITH 2008 & 2009 INTERIMS.

STRUCTURAL CONCRETE: ALL CONCRETE SHALL BE CLASS A1. EXPOSED EDGES SHALL HAVE A 3/4" CHAMFER, UNLESS OTHERWISE NOTED.

REINFORCING STEEL: ALL REINFORCING STEEL SHALL BE GRADE 60. DIMENSIONS RELATING TO THE FABRICATION ARE OUT-TO-OUT OF BARS, UNLESS OTHERWISE NOTED. DIMENSIONS RELATING TO SPACING ARE TO BAR CENTERS, UNLESS OTHERWISE NOTED.

BEDDING MATERIAL: FOR DETAILS OF BEDDING MATERIAL AND UNDERDRAINS, SEE STANDARD DETAIL BD.2.10.1.0.07.

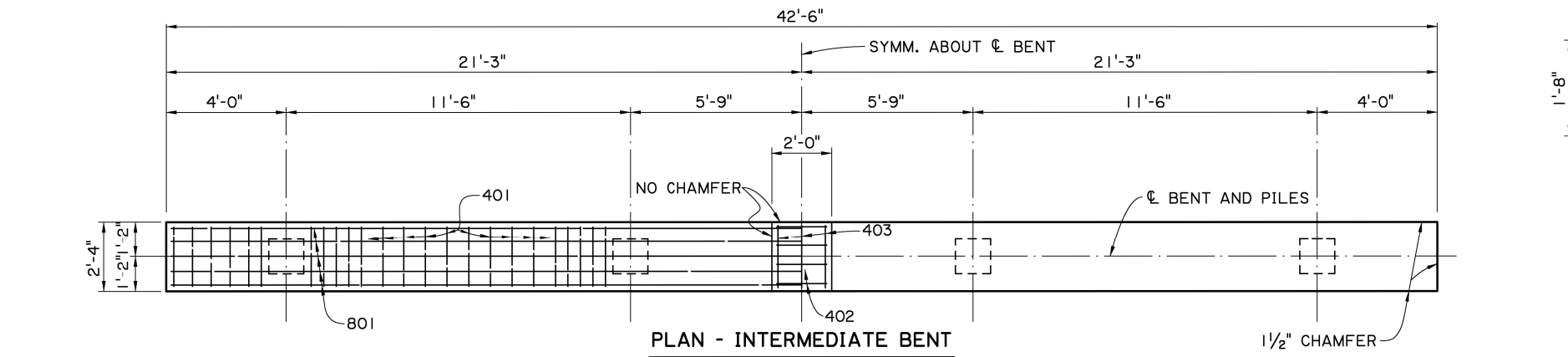
SAWING & SEALING: THE ASPHALT CONCRETE SHALL BE SAW CUT AT THE END OF THE CONCRETE APPROACH SLAB THE ENTIRE ROADWAY WIDTH AND SEALED.

BASIS OF PAYMENT: ALL MATERIAL SHALL BE PAID FOR UNDER 'CONCRETE APPROACH SLABS' ACCORDING TO THE SPECIFICATIONS.



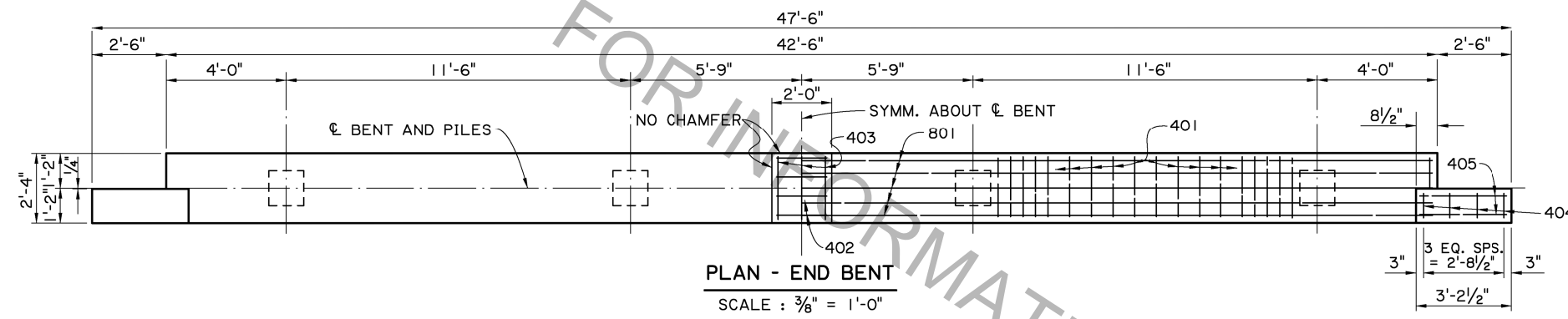
Victor A. Sanchez
05/17/17

SHEET NUMBER	PARISH	CONTROL SECTION	STATE PROJECT
DESIGNED BY: J. NAKHLEH	CHECKED BY: B. DELATTE	DATE: 05/17/17	BY:
DETAILS BY: D. HYMEL	CHECKED BY: J. NAKHLEH	REVISION OR CHANGE ORDER DESCRIPTION	NO.
APPROACH SLAB 20'-0" CONCRETE APPROACH SLAB 40'-0" CLEAR ROADWAY 90° CROSSING ONE WAY TANGENT			



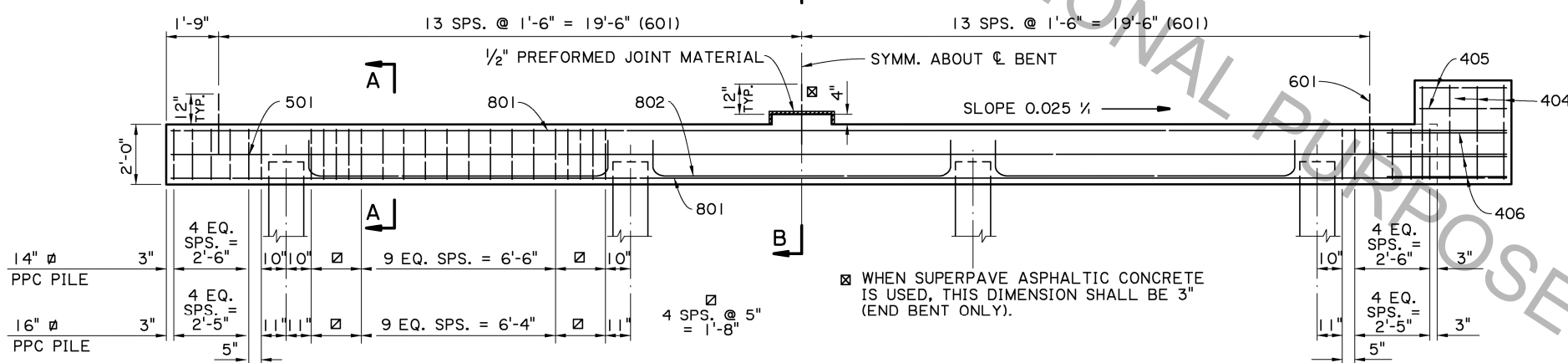
PLAN - INTERMEDIATE BENT

SCALE : 3/8" = 1'-0"



PLAN - END BENT

SCALE : 3/8" = 1'-0"

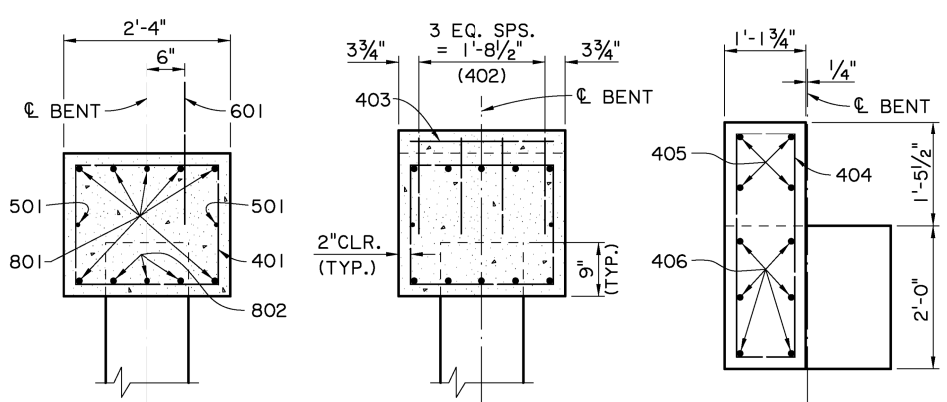


HALF ELEVATION - INTERMEDIATE BENT

SCALE : 3/8" = 1'-0"

HALF ELEVATION - END BENT

SCALE : 3/8" = 1'-0"



SECTION A-A

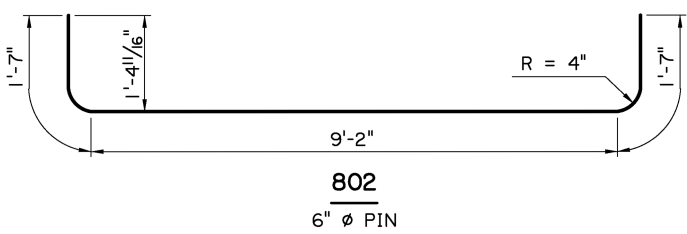
SCALE : 3/4" = 1'-0"

SECTION B-B

SCALE : 3/4" = 1'-0"

END ELEVATION

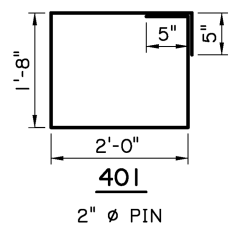
SCALE : 3/4" = 1'-0"



802

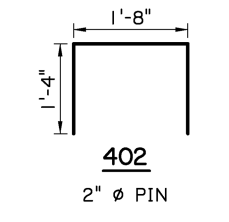
6" Ø PIN

AS-DESIGNED RATING		
VEHICLE	RATING FACTOR	NOTES
HL-93 (INV)	1.570	
HL-93 (OPR)	2.036	
LADV-11 (INV)	1.208	MAGNIFICATION FACTOR = 1.3



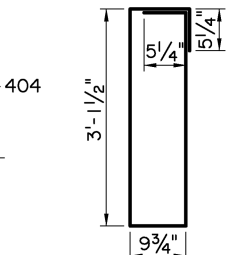
401

2" Ø PIN



402

2" Ø PIN



404

2" Ø PIN



Victor A. Sanchez
05/17/17

ESTIMATED QUANTITIES (ONE INTER. BENT)				
BAR NO.	UNIT LENGTH	TOTAL LENGTH	LOCATION	
801	7	42'-2"	295'-2"	LONGIT. IN CAP
802	9	12'-4"	111'-0"	LONGIT. IN CAP
TOTAL NO. 8 BARS = 406'-2" = 1084 LBS.				
601	27	2'-0"	54'-0"	DOWELS
TOTAL NO. 6 BARS = 54'-0" = 81 LBS.				
501	2	42'-2"	84'-4"	LONGIT. IN CAP
TOTAL NO. 5 BARS = 84'-4" = 88 LBS.				
401	66	8'-2"	539'-0"	STIRRUPS IN CAP
402	4	4'-4"	17'-4"	STIRRUPS IN RISER
403	3	2'-0"	6'-0"	LONGIT. IN RISER
TOTAL NO. 4 BARS = 562'-4" = 376 LBS.				
* TOTAL DEFORMED REINFORCING STEEL = 1629 LBS.				
CLASS A1 CONCRETE = 7.21 CU. YDS.				
MAX. PILE LOAD: SERVICE DEAD LOAD = 31 TONS				
SERVICE LIVE LOAD = 47 TONS				
FACTORED TOTAL LOAD = 108 TONS				

* ADD 81 LBS. OF REINFORCING STEEL (27-601 DOWELS) WHEN TWO FIXED ENDS OCCUR ON THE SAME BENT.

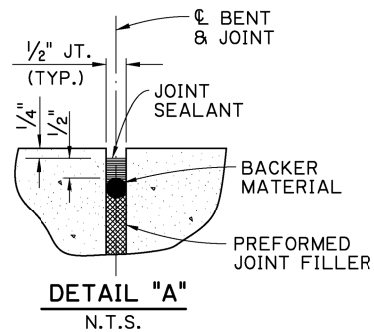
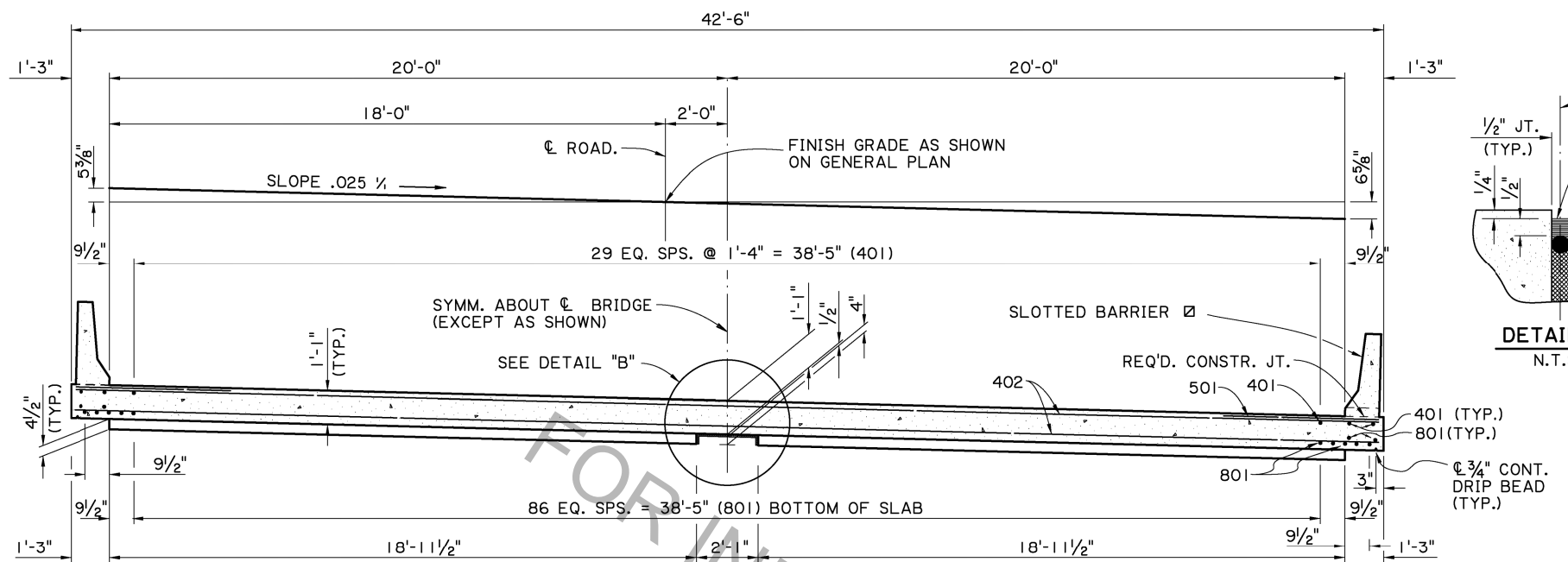
ESTIMATED QUANTITIES (ONE END BENT)				
BAR NO.	UNIT LENGTH	TOTAL LENGTH	LOCATION	
801	7	42'-2"	295'-2"	LONGIT. IN CAP
802	9	12'-4"	111'-0"	LONGIT. IN CAP
TOTAL NO. 8 BARS = 406'-2" = 1084 LBS.				
601	27	2'-0"	54'-0"	DOWELS
TOTAL NO. 6 BARS = 54'-0" = 81 LBS.				
501	2	42'-2"	84'-4"	LONGIT. IN CAP
TOTAL NO. 5 BARS = 84'-4" = 88 LBS.				
401	66	8'-2"	539'-0"	STIRRUPS IN CAP
402	4	4'-4"	17'-4"	STIRRUPS IN RISER
403	3	2'-0"	6'-0"	LONGIT. IN RISER
404	8	8'-9"	70'-0"	STIRRUPS IN WINGWALL
405	8	2'-10"	22'-8"	LONGIT. IN WINGWALL
406	12	4'-0"	48'-0"	LONGIT. IN WINGWALL
TOTAL NO. 4 BARS = 703'-0" = 470 LBS.				
* TOTAL DEFORMED REINFORCING STEEL = 1723 LBS.				
CLASS A1 CONCRETE = 8.03 CU. YDS.				
MAX. PILE LOAD: SERVICE DEAD LOAD = 31 TONS				
SERVICE LIVE LOAD = 47 TONS				
FACTORED TOTAL LOAD = 108 TONS				

Ø 16" Ø PPC PILES USED FOR ESTIMATING PURPOSES ONLY. (ADD 0.05 CU. YDS. OF CLASS A1 CONCRETE PER BENT WHEN 14" Ø PPC PILES ARE USED.)

BENT NOTES:

CONSTRUCTION SPECIFICATIONS: LATEST APPROVED LOUISIANA STANDARD SPECIFICATIONS FOR ROADS AND BRIDGES, SUPPLEMENTAL SPECIFICATIONS AND SPECIAL PROVISIONS.
DESIGN SPECIFICATIONS: AASHTO LRFD BRIDGE DESIGN SPECIFICATIONS, 4th EDITION WITH 2008 & 2009 INTERIMS.
DESIGN LOAD: LIVE LOAD IS HL-93, AND LADV-11 (LOUISIANA DESIGN VEHICLE LIVE LOAD 2011).
STRUCTURAL CONCRETE: ALL CONCRETE SHALL BE CLASS A1. EXPOSED EDGES SHALL HAVE A 3/4" CHAMFER UNLESS OTHERWISE NOTED. ALL EXPOSED FACES OF WINGWALLS AND ENDS OF CAPS SHALL RECEIVE A SURFACE FINISH AS PER SUB-SECTION 805.08 OF THE STANDARD SPECIFICATIONS, EXCEPT WHEN SPECIFIED ELSEWHERE IN THE PLANS. 1/2" PREFORMED JOINT MATERIAL AND ASPHALT SATURATED FELT SHALL BE INCLUDED IN THE PRICE BID FOR CLASS A1 CONCRETE.
REINFORCING STEEL: ALL REINFORCING STEEL SHALL BE GRADE 60. DIMENSIONS RELATING TO FABRICATION ARE OUT TO OUT OF BARS UNLESS OTHERWISE NOTED. DIMENSIONS RELATING TO SPACING ARE TO BAR CENTERS, UNLESS OTHERWISE NOTED. DOWELS (601 BARS) SHALL BE PROVIDED AT ALL FIXED BEARINGS AND APPROACH SLAB BEARINGS (SEE GENERAL PLAN). ALL EXPOSED ENDS OF DOWELS SHALL BE WRAPPED WITH TWO LAYERS OF 15 LB. ASPHALT SATURATED FELT. CLOSE FITTING TUBES OF COMPRESSIBLE MATERIAL NOT LESS THAN 3/16" THICK MAY BE SUBSTITUTED.
PRECAST CONCRETE PILES: FOR DETAILS SEE STANDARD DETAIL BD.2.5.1.0.01 (CS-216). EXTERIOR PILES ARE TO BE BATTERED OUTWARD AT 1/2 ON 12 IN THE LONGITUDINAL DIRECTION OF THE BENT, WHEN NOTED ON THE GENERAL PLAN.
PREFORMED JOINT MATERIAL: PREFORMED JOINT MATERIAL SHALL BE IN ACCORDANCE WITH SECTION 815.04 OF THE STANDARD SPECIFICATIONS.

SHEET NUMBER	DATE	NO.	BY
REVISION OR CHANGE ORDER DESCRIPTION	DATE	NO.	BY
DESIGNED J. NAKHLEH	PARISH	CONTROL SECTION	STATE PROJECT
CHECKED B. DELATTE	DETAILER D. HYMEL	CHECKED J. NAKHLEH	REVIEWED OS/17/17
BENTS REINFORCED CONCRETE PILE BENT 40'-0" CLEAR ROADWAY 90° CROSSING ONE WAY TANGENT STANDARD DETAIL BCSSBR-90-40T-20SL			



ESTIMATED QUANTITIES (ONE SPAN)				
BAR NO.	UNIT LENGTH	TOTAL LENGTH	LOCATION	
801	98	19'-7"	1919'-2"	LONGIT. BOT. OF SLAB
TOTAL NO. 8 BARS = 1919'-2" = 5124 LBS.				
501	56	5'-0"	280'-0"	TRANS. TOP OF SLAB
TOTAL NO. 5 BARS = 280'-0" = 292 LBS.				
401	34	19'-7"	665'-10"	LONGIT. TOP OF SLAB
402	56	43'-10"	2454'-8"	TRANS. TOP & BOT. OF SLAB
TOTAL NO. 4 BARS = 3120'-6" = 2084 LBS.				
TOTAL DEFORMED REINFORCING STEEL = 7501 LBS.				
CLASS A1 CONCRETE = 35.80 CU. YDS.				
CONCRETE RAILING (BARRIER TYPE) = 40.00 LIN. FT.				

* INCLUDES ONE (1) 1'-8" MINIMUM LAP SPLICE. ALL LAP SPLICES ARE TO BE STAGGERED.

SPAN NOTES:

CONSTRUCTION SPECIFICATIONS: LATEST APPROVED LOUISIANA STANDARD SPECIFICATIONS FOR ROADS AND BRIDGES, SUPPLEMENTAL SPECIFICATIONS AND SPECIAL PROVISIONS.

DESIGN SPECIFICATIONS: AASHTO LRFD BRIDGE DESIGN SPECIFICATIONS, 4th EDITION WITH 2008 & 2009 INTERIMS.

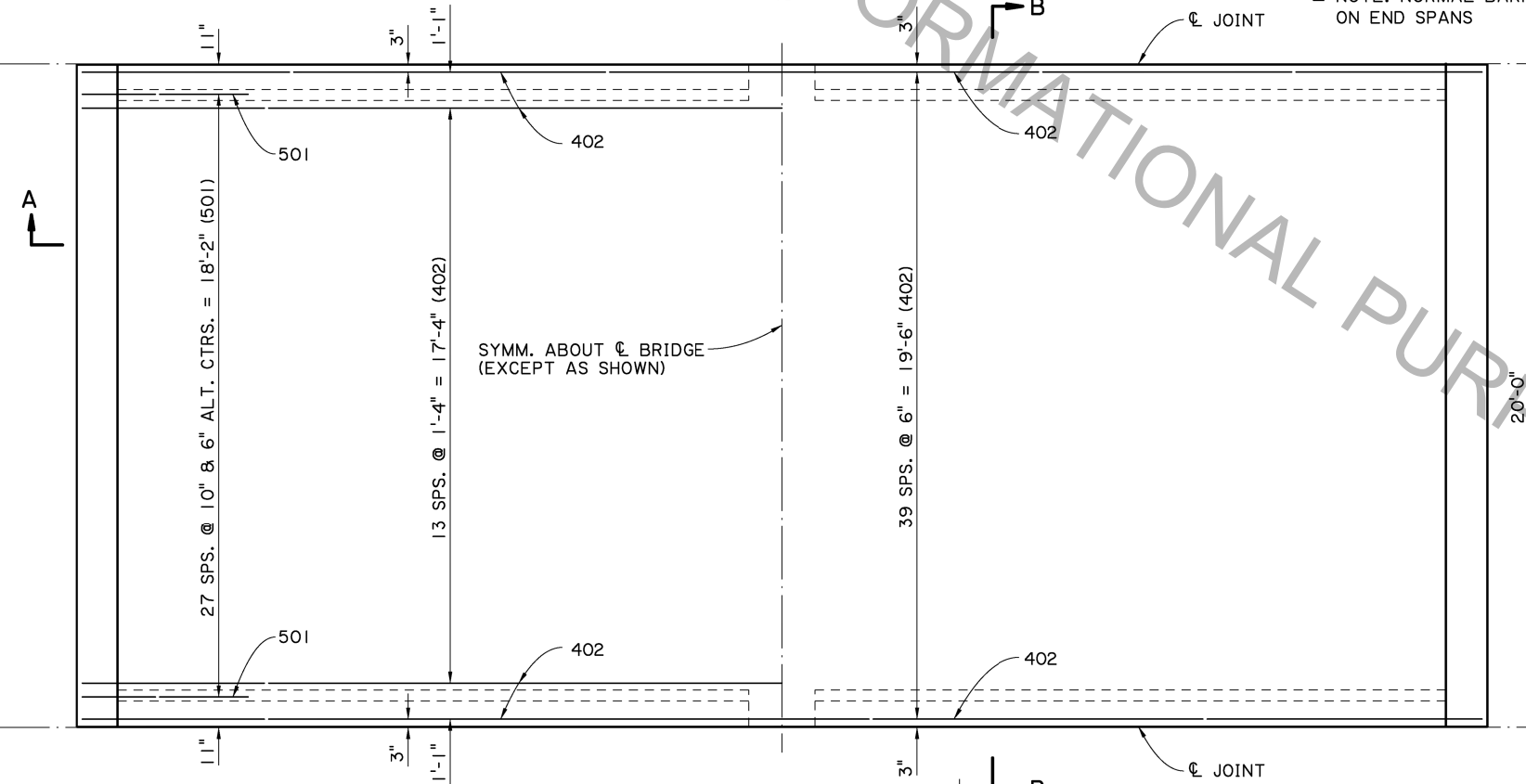
DESIGN LOAD: THE BRIDGE DECK IS DESIGNED FOR A FUTURE WEARING COURSE OF 19 PSF. THE LIVE LOAD IS HL-93, AND LADV-11 (LOUISIANA DESIGN VEHICLE LIVE LOAD 2011).

STRUCTURAL CONCRETE: ALL CONCRETE SHALL BE CLASS A1. EXPOSED EDGES SHALL HAVE A 3/4" CHAMFER UNLESS OTHERWISE NOTED. JOINT SEALANT, BACKER MATERIAL, PREFORMED JOINT FILLER, AND ASPHALT SATURATED FELT SHALL BE INCLUDED IN THE PRICE BID FOR CLASS A1 CONCRETE.

REINFORCING STEEL: ALL REINFORCING STEEL SHALL BE GRADE 60. DIMENSIONS RELATING TO SPACING ARE TO BAR CENTERS, DIMENSIONS RELATING TO FABRICATION ARE OUT TO OUT OF BARS UNLESS OTHERWISE NOTED. ALL REINFORCING BARS SHALL BE PLACED TO PROVIDE A MINIMUM COVER OF ONE INCH FROM THE SURFACE OF THE DRAIN HOLES TO THE FACE OF THE BARS EXCEPT FOR THE TRANSVERSE BARS WHICH MAY BE CUT FOR THIS PURPOSE.

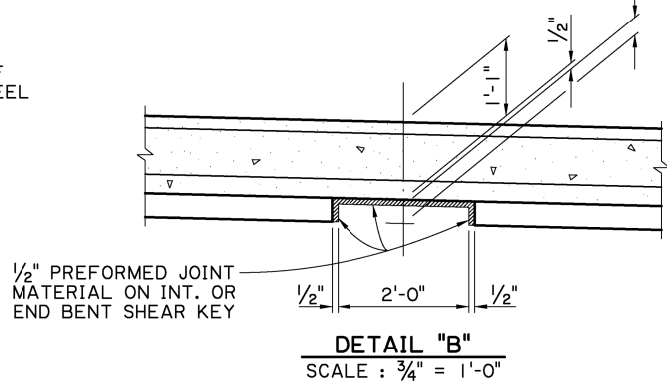
GUARD RAIL: REFER TO THE GENERAL PLAN AND STANDARD PLAN BD.1.1.1.0.0.1 (GR-200) FOR GUARD RAIL REQUIREMENTS.

BARRIER RAILING: FOR BARRIER RAILING DETAILS, SEE STANDARD DETAIL BD.2.6.1.14.02 (BR-02).



HALF PLAN
SHOWING SPACING OF
TOP TRANS. REINF. STEEL
SCALE: 3/8" = 1'-0"

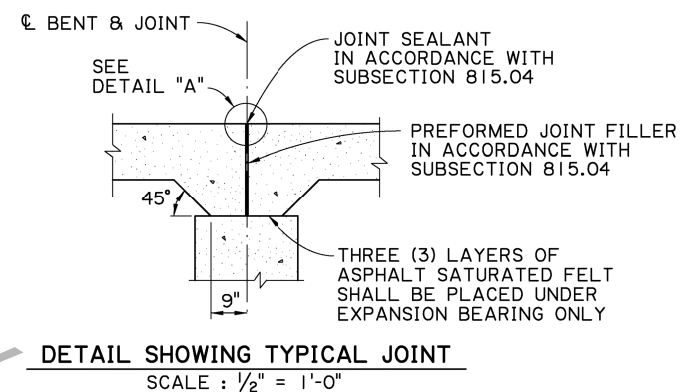
HALF PLAN
SHOWING SPACING OF
BOTTOM TRANS. REINF. STEEL
SCALE: 3/8" = 1'-0"



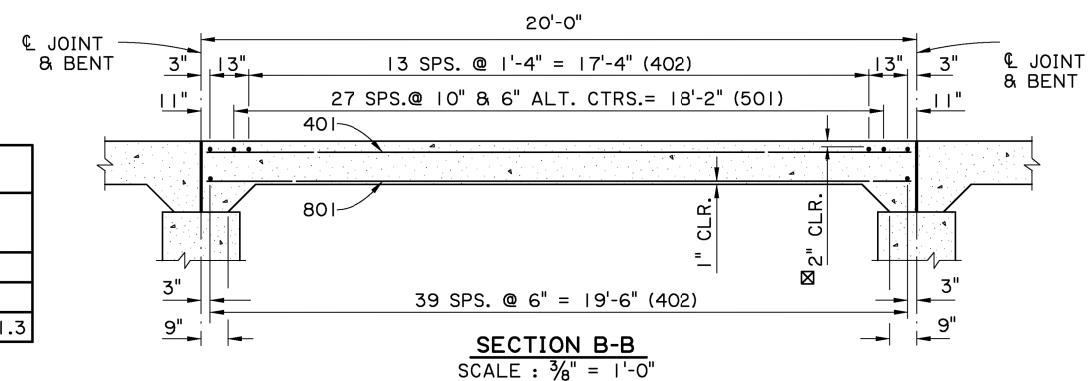
AS-DESIGNED RATING		
VEHICLE	RATING FACTOR	NOTES
HL-93 (INV)	1.384	
HL-93 (OPR)	1.794	
LADV-11 (INV)	1.064	MAGNIFICATION FACTOR = 1.3



Victor A. Sanchez
05/17/17



FOR BRIDGES IN DISTRICTS 04 & 05,
MINIMUM CONCRETE COVER IN TOP OF
SLAB SHALL BE 2 1/2".



SHEET NUMBER: _____

DESIGNED BY: J. NAKHLEH
CHECKED BY: J. PAINE

PARISH: _____

CONTROL SECTION: _____

STATE PROJECT: _____

DATE: 05/17/17

REVISION OR CHANGE ORDER DESCRIPTION: _____

NO. _____

DATE: _____

BY: _____

DOTD
DOT BRIDGE DESIGN

20'-0" CONCRETE SLAB SPAN
40'-0" CLEAR ROADWAY
90° CROSSING ONE WAY TANGENT

STANDARD DETAIL
CSSBR-90-40T-20SL